

«

..

»

4 424

06.03.01

, ..

[Signature] 16.06.16

..

,

[Signature] 16.06.16

..

- *Escherichia coli* *Staphylococcus aureus*.

1)

2)

6

(),
()

« ».

,

.

(-1),

.

1 Pl R,

-1, -2 ...

().

()

- , 1,5 - 2

3 . ,

-

,

.

.

(5 20

1

)

E. coli St. aureus

,

,

.

635, 200, 125 30

3, 4, 5 6

/

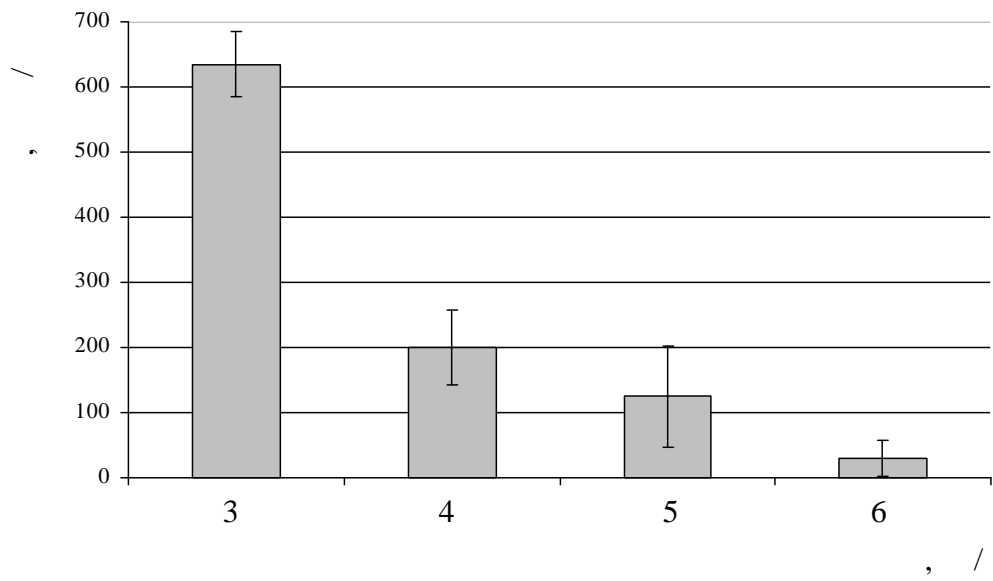
.

,

6 /

5 / .

1
 6 / .
 1 2 / ,



1 – *E. coli*

(1
 /) 10 (100 /),
 (6 /) – 63
 (630 /).

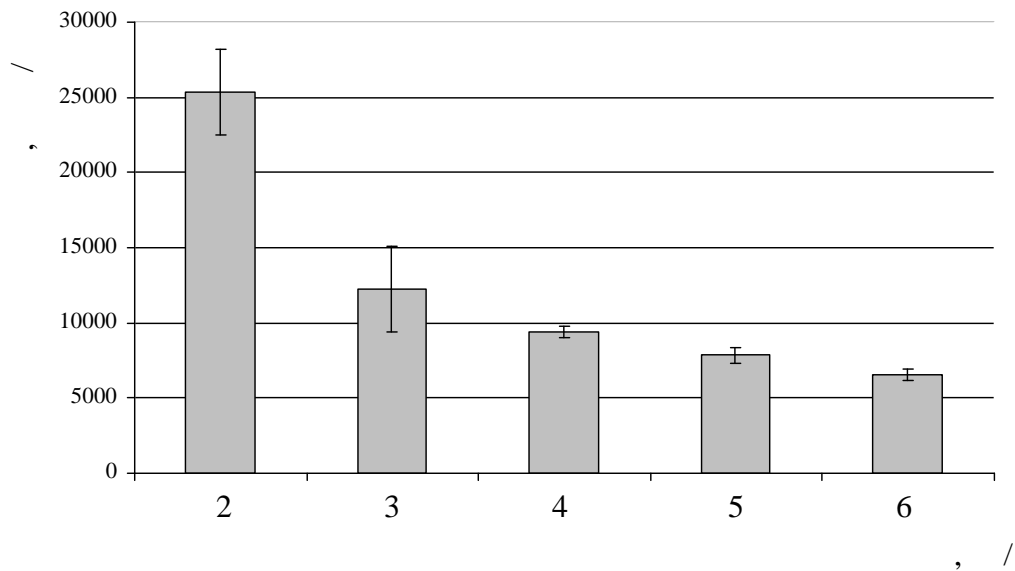
635, 200, 125 30 3, 4, 5 6

/

,
 6 /
 5 / , , ,
 , 4 / . ,
 ,
 4 6 / , . 3 /
 , ,
 . (1 2 /) ,
 . ,
 ,
 , , ,
 . 3-6 /
E. coli ,
 .
 5, 6 (, , 4) /
 .
 1 2 / .
aureus (2). - *St.*
 ,
 (1 /).
E. coli,

2 / .
 (25360 /)
 .
 3 4 /
 (12250 9400 /)
 .
 5 / , 7840
 / . (6580 /)
 6 / . ,
 ,

E. coli.



2 -

St. aureus

,

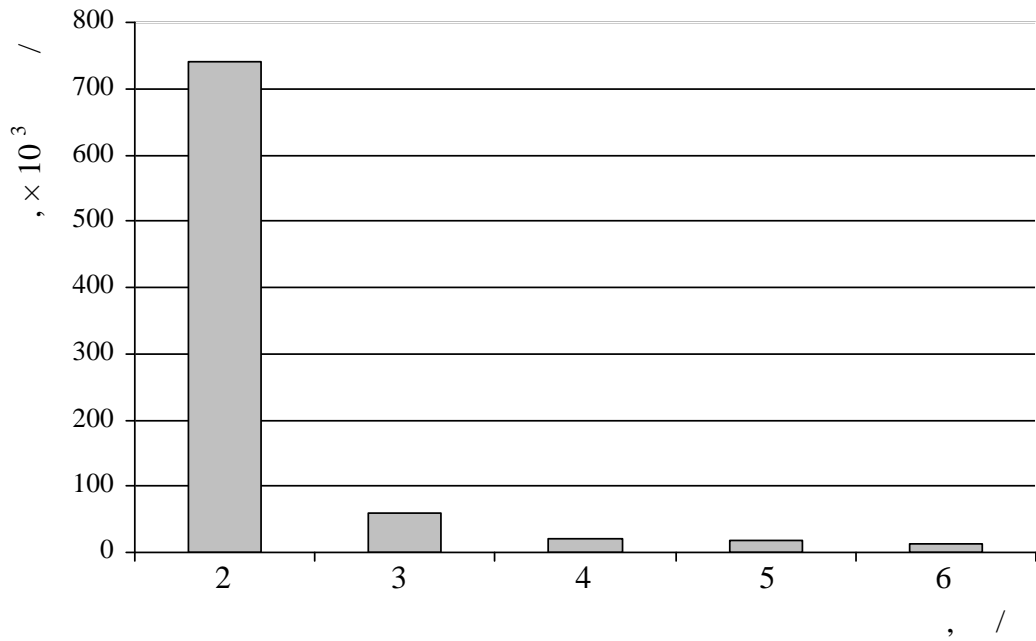
,

E. coli St. aureus.

100-

E. coli

3.



3 –

E. coli

100-

2 / (741×10^3 /).

60×10^3 , 21×10^3 , 18×10^3 , 14×10^3 /

3, 4, 5 6 / .

(1 /).

: (1 /)

120×10^3 / , (6 /) – 31×10^3

/ . , ,

(

), ,

,

E. coli.

, 100-

E.

coli

(

3-6

/ ,

2 /)

,

.

,

,

.

100-

4.

2565×10^3 , $2280 \times$

10^3 , 1938×10^3 1710×10^3 /

3, 4, 5 6

/

.

(1 2 /)

St. aureus.

,

,

,

2,5

,

.

,

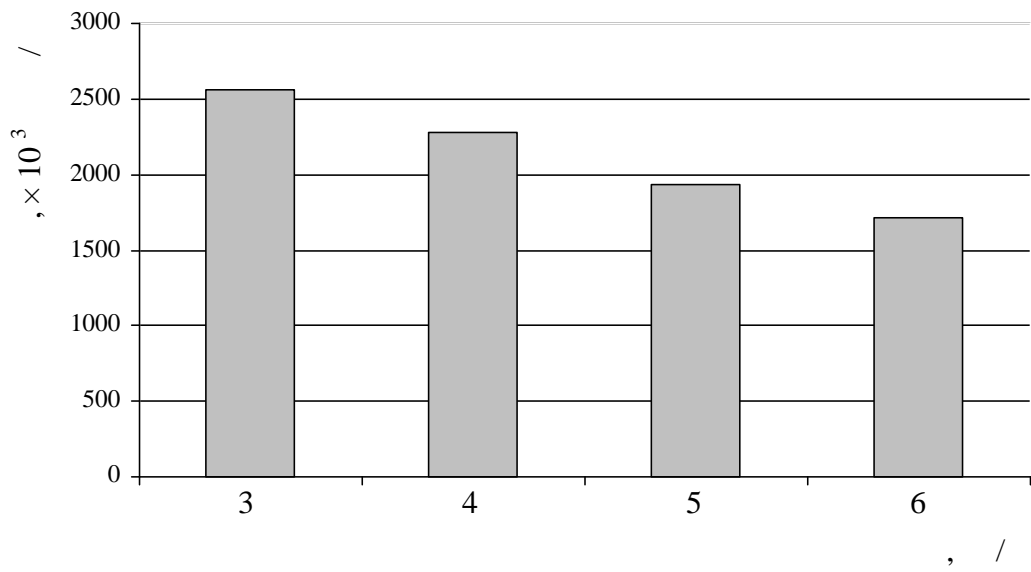
,

,

.

,

.



4 –

St. aureus

100-

, - ,
2 / ,

20-200

(

).

/

,

, 2 / ,

,

3 6 /

,

.

E.coli

, 3 / 2

,

St.

aureus

, , ,

-

3-6 /

-

(*E. coli* *St. aureus*).

,

6 / (

1 6 /).

(1 /)

-

E. coli

St. aureus,

(6 /),

(),

:
1.

-
ureus 209 .

- *Escherichia coli* 113-13 *Staphylococcus*

2.

2-3 / .

3.

